

## FASET Edge Protection

Safety net installers will erect temporary edge protection, along with stair towers and safety nets for those working on roofs. This “one stop” shop is appealing to the principle contractors because the “temporary works package” is controlled through one source.

### Temporary Edge Protection Systems

Edge protection systems, supported by Engineers calculations will utilise a variety of different components. Systems are generally built to EN 13374, Classes A, B or C.

3 Education deliver the FASET edge protection course that is the starting point to a qualification.

It includes theory and practical work at height from a MEWP. The day is highly interactive and involves learning through activity.

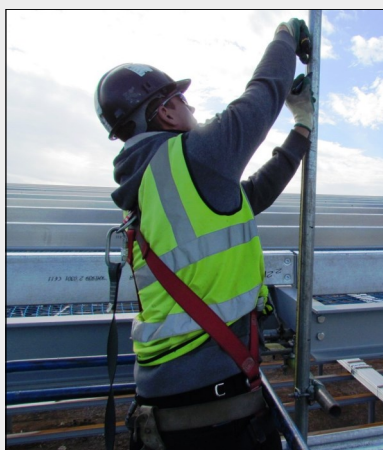
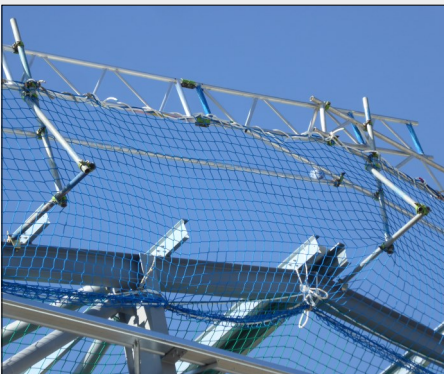
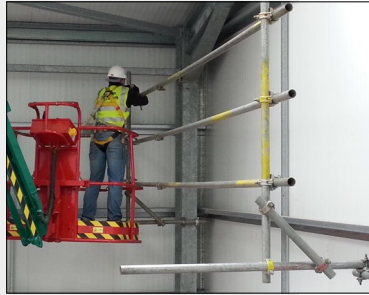
### Certificates

Candidates will receive a FASET Certificate at the end of the course. For those with on-site experience, an assessment on the day of training will take place.

If a *pass* is achieved, a Blue CSCS Skilled Worker card may be applied for. Those with Blue CSCS Skilled Worker Safety Net

Rigger cards may apply for an edge protection endorsement.

Those who do not meet the GSA2 practical requirements on the day of training must organise an on-site assessment in the future following more experience on site\*.



### Syllabus

- FASET
- Introduction & Objectives
- Legislation & Standards
- Components
- How edge protection works
- Planning
- RAMS
- Safe Working with others
- Manual Handling
- Drawings & information
- Attaching to the building
- Test
- Practical (erecting employers system)
- Assessment

### Facilities

Our training centre near Westcott, Bicester is the best place to hold this training. The practical facilities ensure candidates receive the most realistic learning possible. They will use training rigs to learn the basics and by the end of the session, will progress to installing from MEWP's.

### Candidate numbers

Maximum 4/course.

### Next Step

To start the process, clients need to contact 3 Education to discuss objectives and timings. They also need to provide drawings of their own system designs to ensure there is sufficient equipment to build multiple systems during the day. We agree a date & logistics and then the process begins!

### CORONAVIRUS

#### UPDATE:

Our Risk Assessment has identified ways in which we can provide a safe environment for all who attend our centre. All visitors will be required to undertake *our* Lateral Flow Test at 0800 before being admitted to the course. This is for everyone's health and safety.

\*charges apply

